

LG CHEM

SOCIAL PARTNERSHIPS



Contents

Vision & Strategic goals 03

Vision
Social Partnership Strategies
Strategic goals and action plans

Our principal programs 05

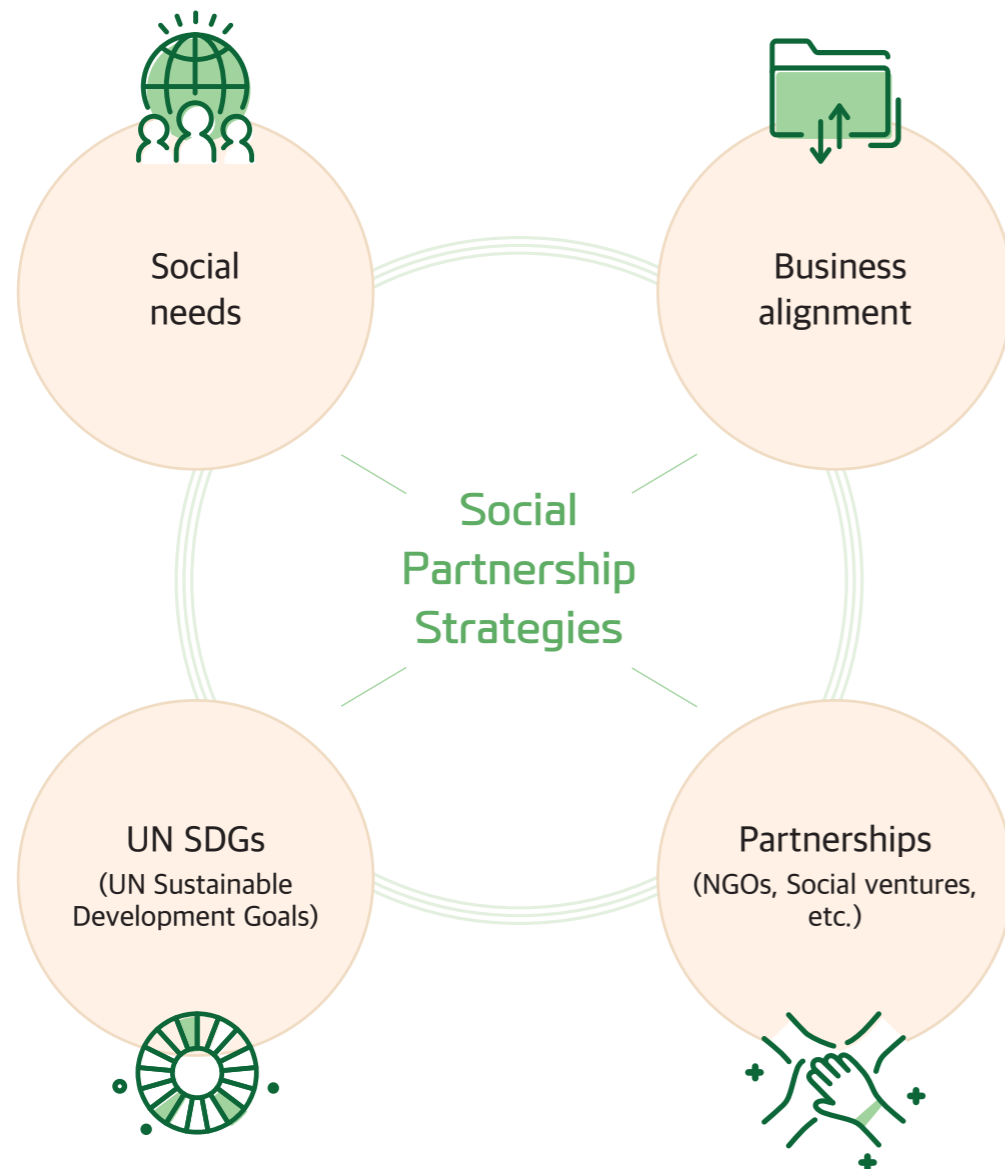
Like Green
Blue Forest
Conserving biodiversity in Bamseom
LG Social Campus
Seoul Hope Green Power Plant

2022 Social partnerships in numbers 10

Social Partnership Performance
Employee Volunteer Activities
Ratio of Social Partnerships by Type

LG Chem Green Connector

LG Chem connects social partnership with green values to forge a more sustainable future for all.



Strategic goals and action plans

Green Education

We support the development of ESG talent for the future generation by providing science and environmental education to youth.



· Like Green

Green Ecology

We respond to the global environmental crisis by conserving biodiversity.



· Blue Forest
· Conserving biodiversity in Bamseom

Green Economy

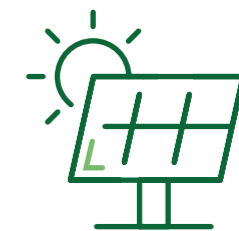
We support eco-friendly economic activities to create social value.



· LG Social Campus
· ESG donation challenge "RZ?"

Green Energy

We expand renewable energy and improve energy efficiency to contribute to Net-Zero.



· Seoul Hope Green Power Plant



Like Green

Like Green is an online ESG leader training program that teaches people how to protect the environment in their daily lives and create a sustainable future.

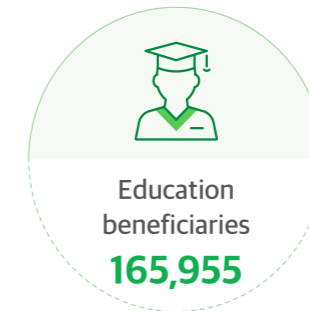
Online mentoring

Teenagers from all over the country who are passionate about the environment will work with college student mentors to learn about environmental issues and take action in their daily lives, focusing on the G.R.E.E.N. framework.



Green Concert

Teenager mentees and college student mentors who have participated in mentoring create short videos of their learning content and research results to lead a campaign to solve social problems.



Green Festival

This program provides lectures and conversations by experts in the ESG field to help ordinary citizens understand environmental and social issues and participate in the formation of a proper ESG culture.



Green classes

We provide educational materials to schools and care institutions to help students understand the environmental and social issues that the current and future generations are facing.





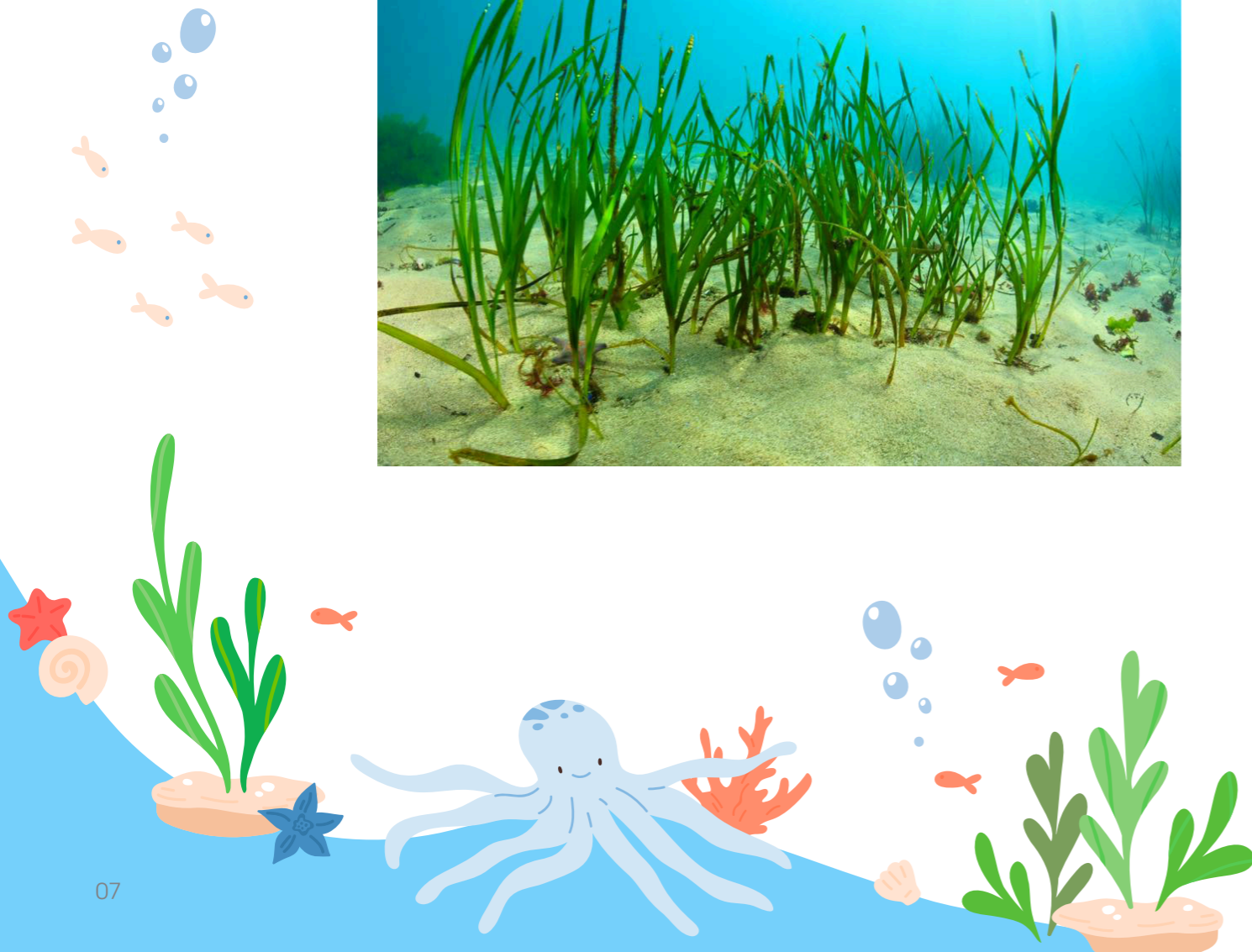
Blue Forest

Blue Forest is a new social contribution project that restores the habitat of seagrass in the sea to preserve the marine ecosystem and reduce carbon, and induces the participation of global citizens by using the virtual metaverse.

Seagrass Restoration Project

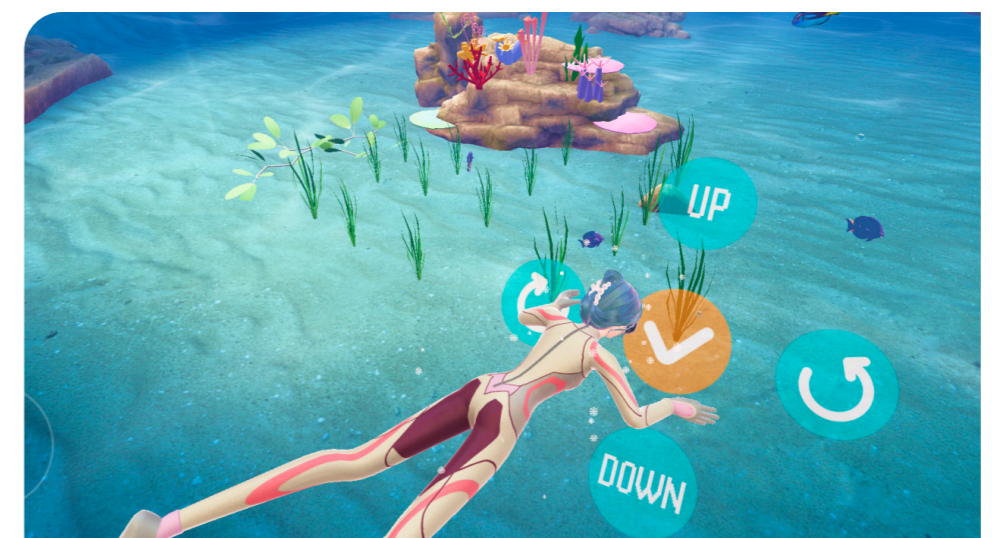
We are restoring and expanding seagrass habitats in the coastal area of Yeosu, one of the three major blue carbon stores. This will contribute to biodiversity conservation, water quality improvement, fisheries production, and carbon reduction.

Blue carbon is the carbon stored in oceans and coastal ecosystems.



Creating my own sea forest 'Blue Forest'

We are building a virtual world map in the metaverse platform Zeppeto where you can create your own sea forest. We are also providing various mission activities and information to raise awareness and encourage voluntary participation among participants.





Conserving biodiversity in Bamseom

LG Chem offers a variety of social contribution programs for the preservation of the ecological environment, such as biodiversity education and the operation of the Bamseom Ecological Experience Center.

We are the Green Heroes

We help 50 selected children and teenagers become youth activist who can understand and spread the value of biodiversity conservation in Bamseom by conducting biodiversity education, exploring ecological conservation areas, and planning Bamseom festivals.



We are the Green Friends

We provide educational materials related to biodiversity, such as lesson plans, videos, and board games, to community child centers, schools, and other places that need environmental education. We also conduct online education.



Bamseom Ecological Experience Center

Bamseom is a Ramsar wetland, home to rare and endangered plants and animals. We have built an ecological experience center on Mapo Bridge to raise awareness of its importance.

Ramsar : Wetlands with biogeographic features or importance as habitats for rare flora and fauna





LG Social Campus

LG Social Campus is a platform that cultivates the social and economic ecosystem in the field of climate and environment. It provides resources and support to social enterprises that are working to address climate change and environmental issues. The platform is jointly operated by LG Chem and LG Electronics, and it is expected to have a real impact on the lives of people and the planet.

Financial support

We provide management funds, performance-based incentives, and other financial resources to innovative and socially beneficial environmental social enterprises to support their self-reliance and growth.



Growth support

We provide customized accelerator programs that include training, mentoring, and networking opportunities to social enterprises that create environmental impact. These programs help social enterprises to strengthen their capabilities, improve their competitiveness, and achieve their goals.



Talent development

- **Local Value-Up** : We support local activists through programs such as the Local Value-Up program, which helps them to define and propose solutions to local problems.
- **1-Minute-1-Second Film Festival** : This is a competition in which participants create and show 1-minute-1-second videos that propose practices or solutions to SDGs and global environmental issues.



Space support

We support social enterprises and social ventures by providing a variety of social complex spaces, including independent offices, meeting rooms, and co-working spaces. We also operate an incubation center for early-stage ventures.





Seoul Hope Green Power Plant

Seoul Hope Green Power Plant is an environmentally friendly energy welfare project that installs solar power plants on public land in local governments. The project helps to reduce greenhouse gas emissions and provides clean energy to those who need it most.

Seoul Hope Green Scholarship

We provide 1 million won scholarships each year to 31 students from low-income households who demonstrate academic achievement and a strong commitment to education. The scholarships are designed to help students improve their academic motivation and bridge the education gap.



Energy welfare project

LG Chem provides heating subsidies and winter clothes to help the city's energy vulnerable population stay warm and healthy during the winter.





Support for **131** scholarship students

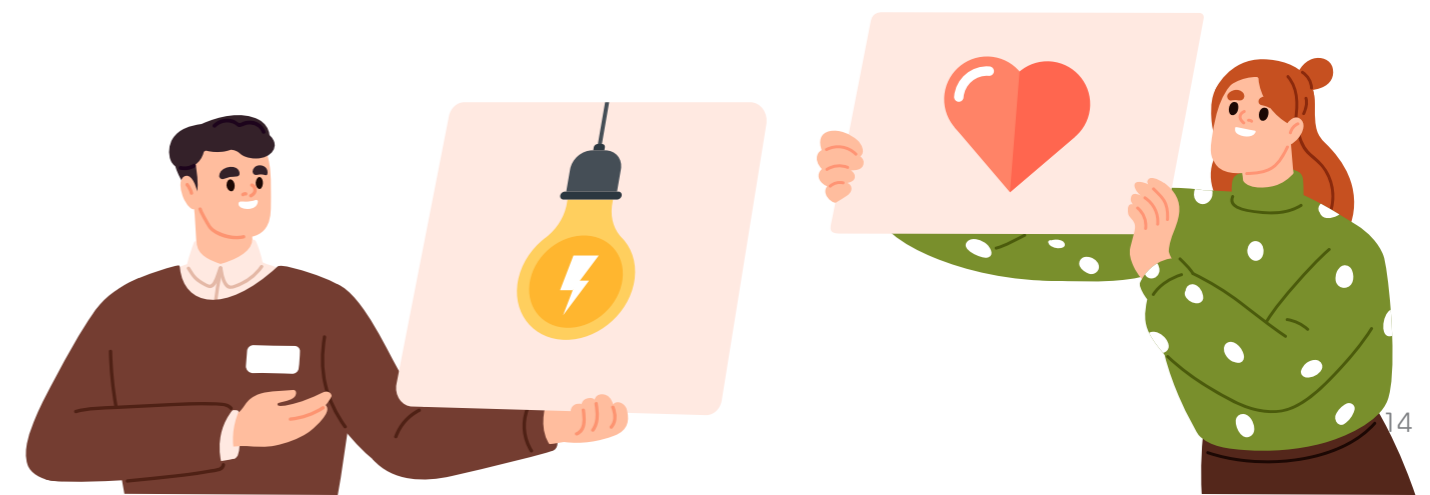


3,781 energy welfare support households

200 thousand young pine trees can absorb



1,660 tons of carbon reduction



2022 Social Partnerships in numbers

Social Partnership Performance

21.7 billion Unit: KRW

Employee Volunteer Activities

Participants

1,239 person

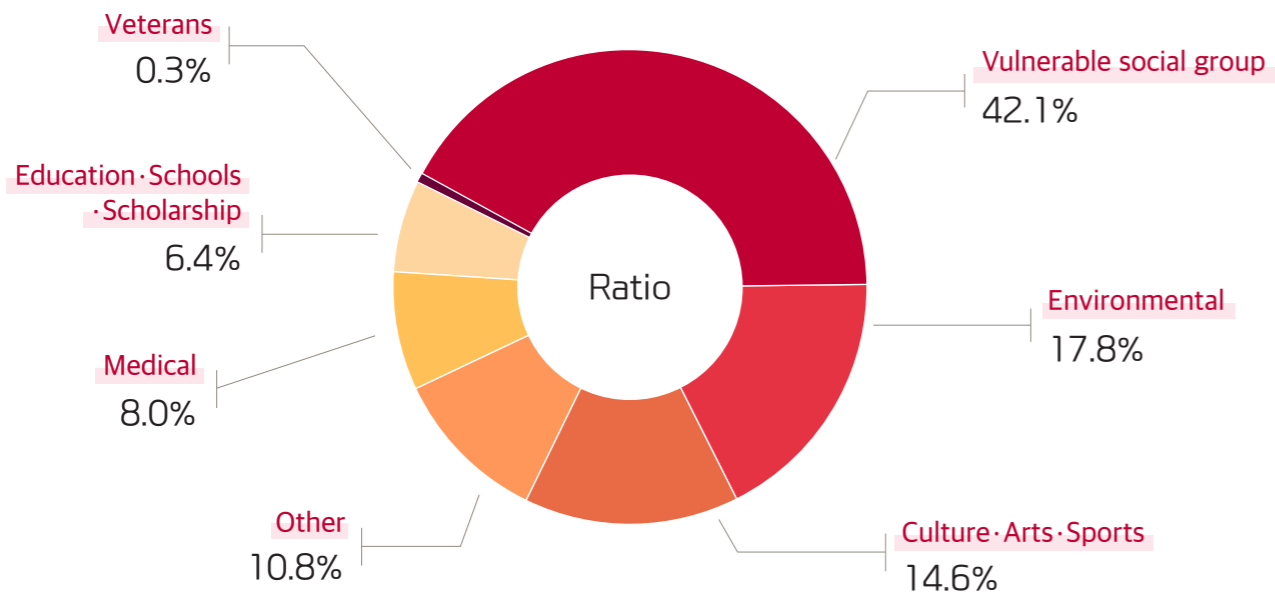


Volunteer hours

3,371 hour



Ratio of Social Partnerships by Type



Other: Rural support, consumer group support, emergency disaster support, etc.

LG Chem Social Partnership

